

Checkmate puzzles

Most chess puzzles involve trying to give checkmate in a certain number of moves. By practicing these kinds of puzzles, you should improve your ability to spot checkmate opportunities that occur in your own games.

Did you know?

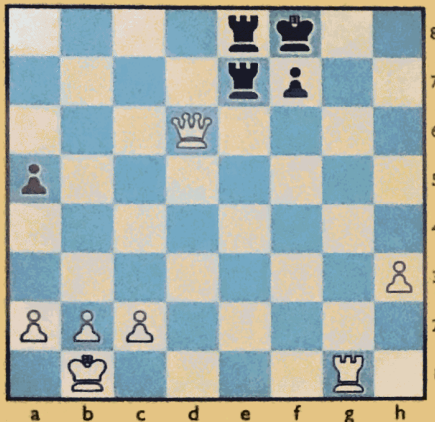
A poem published in 1763 told of how the Roman god Mars created chess and named it after a dryad called Caissa. She became known as the patron goddess of chess.

Internet link

For a link to a Web site with more chess puzzles, go to www.usborne-quicklinks.com



Walled-in King



Can you spot a move for White that means checkmate for Black?

CLUE: Attack the King's exposed side – it can't run away.

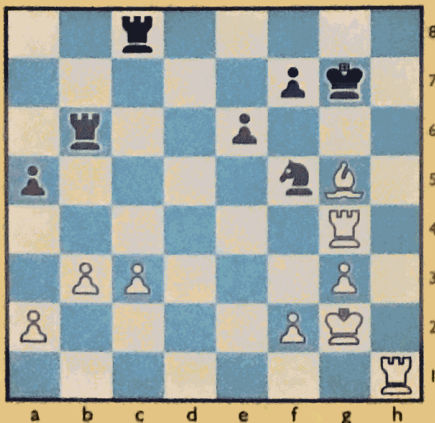
Surrounded



How can White infiltrate the King's defenses here to give mate in one?

CLUE: Surround the black King with attacking pieces.

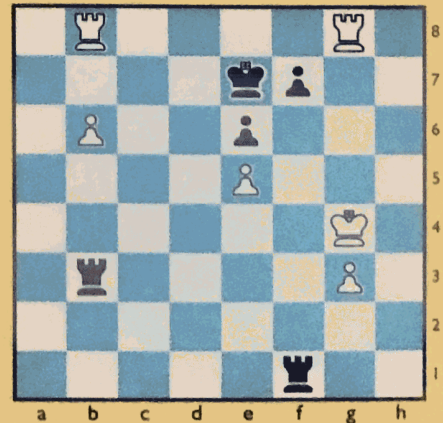
Discovered doom



White can give checkmate in one on this board. What is the best move?

CLUE: Reveal a Rook.

Humble attacker

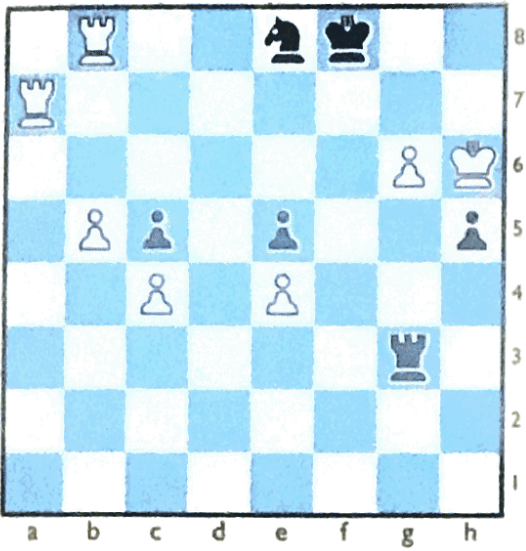


One little move for White here defeats Black. What is it?

CLUE: Use a Pawn as part of your mating net.

For puzzle solutions see page 91.

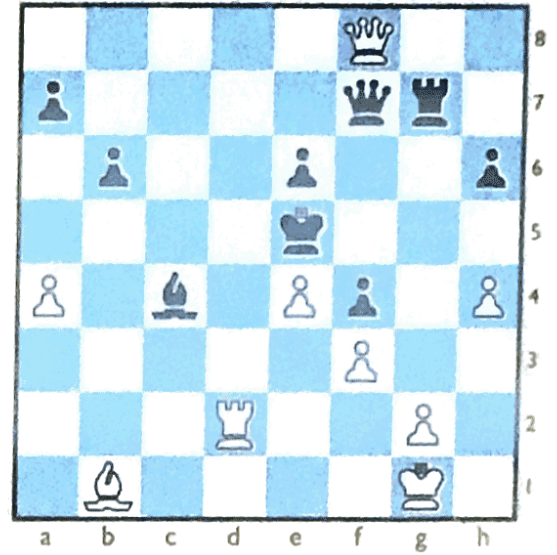
Repeated blows



Which two punishing moves will checkmate Black here?

CLUE: Give your most powerful pieces a bit of Pawn support.

King in the bag



Can you find two moves for White that ensnare the black King?

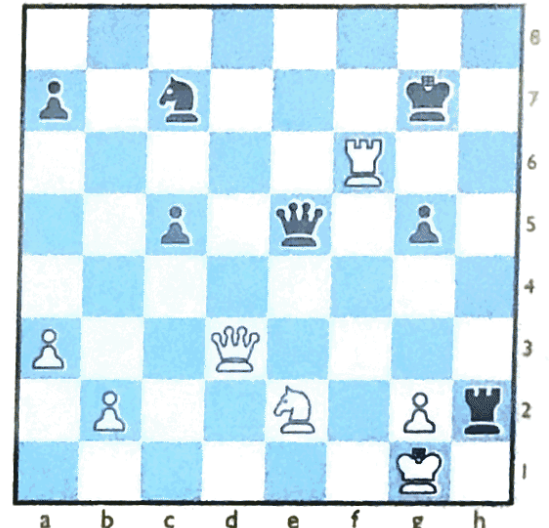
Buried alive



Can you find a two-move checkmate for White here?

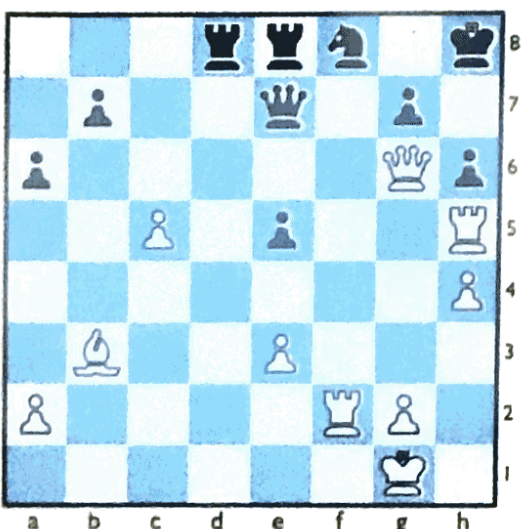
CLUE: Make the ultimate sacrifice to win.

Against the wall



Can you find a two move sequence for White to checkmate Black?

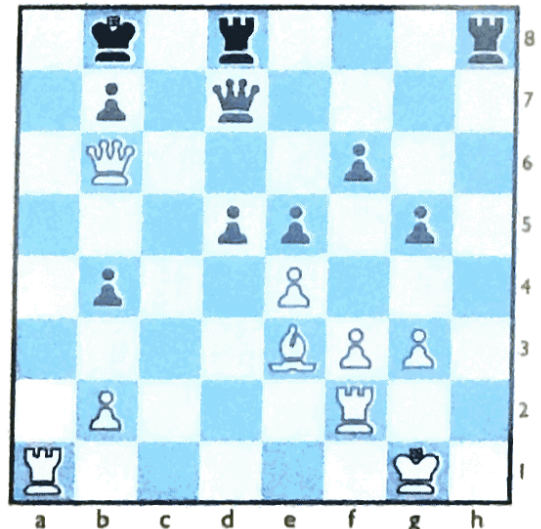
Sealed fate



Which White move leaves Black unable to prevent checkmate?

CLUE: Use the distant protection of a Bishop.

Death threat



Can you see the two-move mate for White?