



CAMP EMERSON

CALIFORNIA INLAND EMPIRE COUNCIL

SCOUTS BSA | SUMMER CAMP

WEEK AT A GLANCE

Time	Sunday	Monday	Tuesday	Wednesday	Thursday	Friday	Saturday	
5:30						Centennial Loop Hike Meet @ Dining Hall		
6:00			Polar Plunge		Polar Plunge			
6:30		Reveille	Reveille	Reveille	Reveille	Reveille	Reveille	
7:00		Morning Flags	Morning Flags	Morning Flags	Morning Flags	Morning Flags	Morning Flags	
7:30		Breakfast	Breakfast	Breakfast	Breakfast	Breakfast	Breakfast	
9:00		Merit Badge Session 1	Merit Badge Session 1	Merit Badge Session 1	Merit Badge Session 1	Merit Badge Makeup Sessions	8:15 Scouts Own Bear Trap Bowl	
10:00		Merit Badge Session 2	Merit Badge Session 2 *	Merit Badge Session 2	Merit Badge Session 2*		Mile Swim	8:30 Cleanup Campsites & Inspection
11:00		Merit Badge Session 3	Merit Badge Session 3	Merit Badge Session 3	Merit Badge Session 3	Cycling Merit Badge @ Dining Hall for 22 mile ride - 9:00		
12:00		Program Areas Closed	Program Areas Closed	Program Areas Closed	Program Areas Closed			10:00 Depart Camp
12:30		Lunch	Lunch	Lunch	Lunch	Lunch		
1:00		Arrival Unit Check In Swim Checks Campsite Setup						
1:45			Merit Badge Session 4	Merit Badge Session 4	Merit Badge Session 4	Merit Badge Session 4	Scoutmaster & SPL Camp-Wide Games 2:00 - Nature @ Nature Lodge 2:30 - Handicraft @ Boyce Lodge 3:00 - High Adventure @ Dan Beard Lodge 3:30 - Outdoor Skills @ ODS 4:00 - Aquatics @ Lake 4:30 - Shooting Sports @ Ranges	
2:45			Merit Badge Session 5	Merit Badge Session 5	Merit Badge Session 5	Merit Badge Session 5		
3:45	NEW Open Climb @ Climbing Tower		NEW Open Climb @ Climbing Tower	NEW Open Climb @ Climbing Tower	NEW Open Climb @ Climbing Tower			
	Open Areas Rifle Archery Chalk Ball @ Shotgun Range Pool Handicraft Totin Chip Firem'n Chit Paul Bunyan		Open Areas Blackpowder @ Rifle Range Handicraft Pool Totin Chip Firem'n Chit Paul Bunyan	Open Areas Rifle Handicraft Archery Pool Totin Chip Firem'n Chit Paul Bunyan	Open Areas Shotgun Archery Chalk Ball @ Rifle Range Pool Handicraft Totin Chip Firem'n Chit Paul Bunyan			
4:30	Scoutmaster & SPL Leader Meeting							
5:15		Program Areas Closed	Program Areas Closed	Program Areas Closed	Program Areas Closed			
5:30	Assemble for Evening Flags	Assemble for Evening Flags**	Assemble for Evening Flags	Assemble for Evening Flags	Assemble for Evening Flags	Assemble for Evening Flags		
5:45	Evening Flags	Evening Flags	Evening Flags	Evening Flags	Evening Flags	Evening Flags		
6:00	Dinner	Dinner	Dinner***	Dinner	Dinner***	Dinner		
7:00	Troop Time	Troop Time Branding @ Trading Post 7-8 pm Archery 7:00-dark Tomahawk @ Tomahawk Range 7-8 pm Astronomy Overnighter 8:00	Troop Time Branding @ Trading Post 7-8 pm Archery 7:00-dark Tomahawk @ Tomahawk Range 7-8 pm Astronomy Overnighter 8:00	Swamp Swim @ Pool	Troop Time Branding @ Trading Post 7-8 pm Tomahawk @ Tomahawk Range 7-8 pm Wilderness Survival Overnighter 8:00 Meet @ Fort	Troop Time		
8:00	Opening Campfire (Bear Trap Bowl)			Commissioners Campfire			Campfire & Awards	
9:00	Cracker Barrel (following Campfire)			OA Night @ Dining Hall			Cracker Barrel (following Campfire)	
10:00	Lights Out	Lights Out	Lights Out	Lights Out	Lights Out	Lights Out		

*Scoutmaster & Troop Leaders Meeting @ Dining Hall - Tue & Thur

**Fire Drill - Mon

***SPL/ASPL Meeting in front of Lodge - Tue & Thur

CALIFORNIA INLAND EMPIRE COUNCIL SCOUTS BSA SUMMER CAMP



Located about a mile in elevation, high in the San Jacinto Mountain Range, Camp Emerson is the oldest continuously operated Scout Camp in the Western United States. It is a thrill to be in camp when the last rays of the summer sun cast a pink and purple haze on majestic Tahquitz Peak, and dusk fades into the night sky with stars so big and bright that you can almost reach up and touch them. These sights - these experiences will create memories that last a lifetime.

If you are interested in a quality program with an enthusiastic staff, then Emerson is your camp. Our staff will meet you at the camp entrance and lead you on a camp tour as well as guide you to your campsite. All staff members will be at the ready to assist you with any of your needs, whether in your campsite or with a merit badge or program event. Whatever your needs might be, just let us know so that we can best serve your unit.

The task of the Unit Leader is to make sure that youth can take advantage of Camp Emerson's program opportunities. Emerson has a plethora of merit badges as well as other activities. Camp Emerson is continuing the Outpost program for all campers, as a part of the E-Team program. An Outpost is an overnight experience aimed at allowing Scouts to learn new skills and have new experiences.

We would like to invite you to this special place and encourage you to gain full access to the opportunities at camp this summer. Summer Camp is important to the development of the youth of your Unit, and your Scouts are going to grow in skills, camaraderie, and character during the week with many frontiers and horizons open to them. Our staff is here to help and guide you every step of the way as we step forward into the future together.

The camping program of the California Inland Empire Council would be proud to be a part of your Troop's effort in serving youth; we look forward to meeting all of you this summer.

In the Spirit of Scouting,

Crystal Pastorian
Camp Director

Kelly Cromwell
Program Director

2020 SCHEDULE
WEEK 1 - JULY 5-11
WEEK 2 - JULY 12-15
WEEK 3 - JULY 19-25
\$385 YOUTH | \$200 ADULT

**Is your Scout not going to Camp? Trouble finding Scout Leaders to go?
We have provisional Scout Troops each week of Camp!**

www.Camp-Emerson.org

AQUATICS



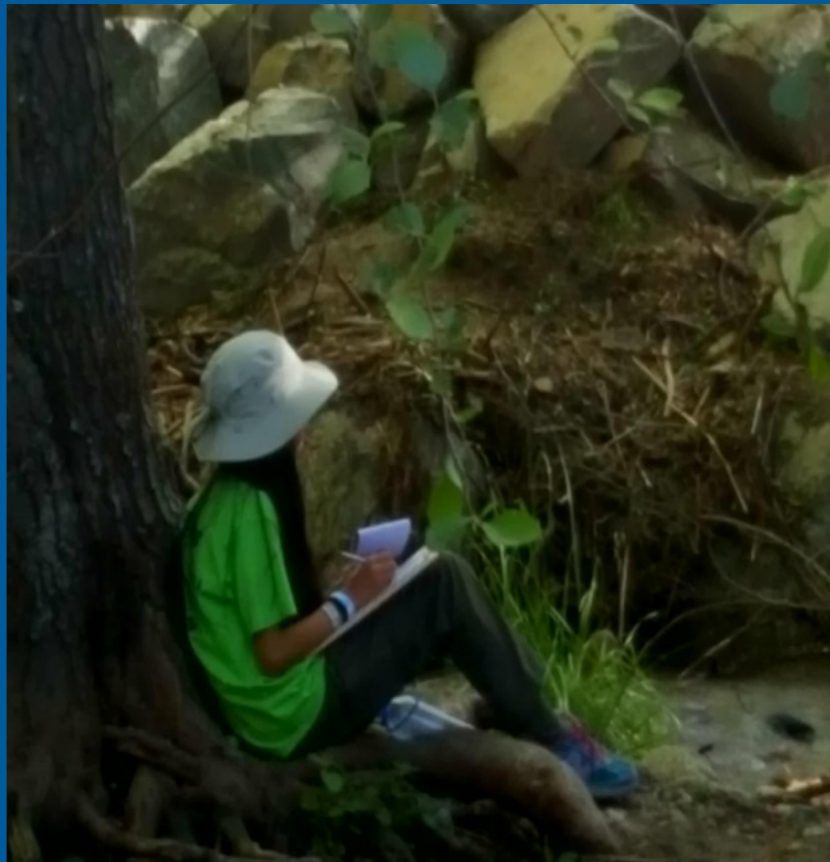
CAMP EMERSON



HANDICRAFT



NATURE



OUTDOOR SKILLS



OUTDOOR SKILLS



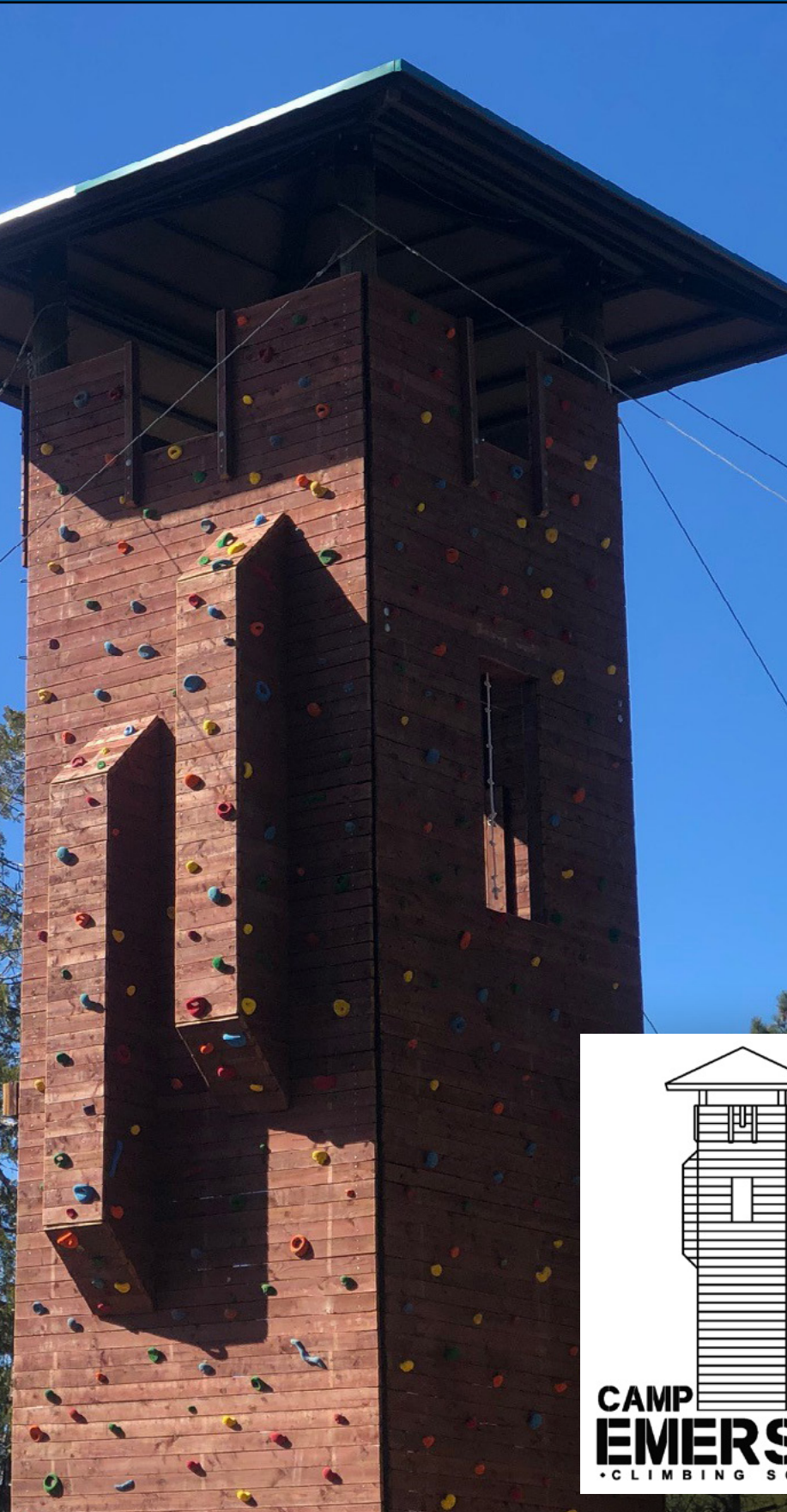
SHOOTING SPORTS



HIGH ADVENTURE



HIGH ADVENTURE



www.Camp-Emerson.org

HIGH ADVENTURE





EXPLORE





DREAM





DISCOVER





www.Camp-Emerson.org



**CALIFORNIA INLAND
EMPIRE COUNCIL**

1230 Indiana Court
Redlands, CA 92374
909.793.2463

CAMP EMERSON
53155 Idyllbrook Drive
Idyllwild, CA 92549

www.CIECBSA.org